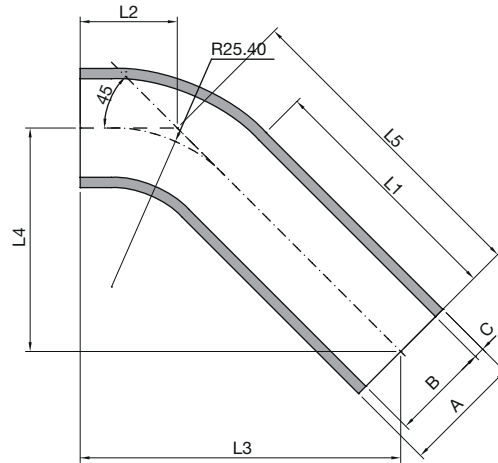


TECHNICAL INFORMATION \_ CAT. N. YBPE-5A##-45-1

# 45° EXTENDED BUTT WELD ELBOW FOR ORBITAL WELDING



Clean and Aseptic Valves of CAD Product Line have simple and safe design, with their full drainability, without asymptotic seal and dead leg, are offering fast cleanability and sterilization practices. They are designed to fulfil stringent demands of CIP-SIP and Production Cycles on Aseptic Processing.

**45° Extended Butt Weld Upgrade** to perform orbital weldings on CAD Valves connections. Pipe dimensions according to ASME-BPE regulations, material 1.4435-BN2.

CODE	CAD SIZE	A mm (inch)	B mm (inch)	C mm (inch)	L1 mm (inch)	L2 mm (inch)	L3 mm (inch)	L4 mm (inch)	L5 mm (inch)
YBPE-5A12-45-1	A12	12,70 (0,50)	9,40 (0,37)	1,65 (0,065)	46,00 (1,81)	20,50 (0,81)	61,00 (2,40)	40,50 (1,60)	57,20 (2,25)
YBPE-5A19-45-1	A19	19,05 (0,75)	15,75 (0,62)	1,65 (0,065)	46,00 (1,81)	20,50 (0,81)	61,00 (2,40)	40,50 (1,60)	57,20 (2,25)
YBPE-5A25-45-1	A25	25,40 (1,00)	22,10 (0,87)	1,65 (0,065)	41,00 (1,61)	26,00 (1,02)	66,00 (2,60)	40,50 (1,60)	57,20 (2,25)
YBPE-5A38-45-1	A38	38,10 (1,50)	34,80 (1,37)	1,65 (0,065)	40,00 (1,58)	34,00 (1,34)	78,50 (3,09)	45,00 (1,77)	63,50 (2,50)
YBPE-5A50-45-1	A50	50,80 (2,00)	47,50 (1,87)	1,65 (0,065)	44,50 (1,75)	46,50 (1,83)	100,50 (3,96)	54,00 (2,13)	76,20 (3,00)
YBPE-5A63-45-1	A63	63,50 (2,50)	60,20 (2,37)	1,65 (0,065)	46,00 (1,81)	54,50 (2,15)	115,00 (4,53)	60,50 (2,38)	85,70 (3,37)
YBPE-5A76-45-1	A76	76,20 (3,00)	72,90 (2,87)	1,65 (0,065)	44,50 (1,75)	44,50 (1,75)	157,00 (6,18)	65,00 (2,56)	92,10 (3,63)
YBPE-5A00-45-1	A00	101,60 (4,00)	97,39 (3,83)	2,11 (0,083)	51,00 (2,01)	51,00 (2,01)	195,00 (7,68)	81,00 (3,19)	114,30 (4,50)

Pipe design according to ASTM® A269/270 - ASME BPE

Pipe material: AISI 316L - 1.4435 - BN2

Optional: AISI 316L according to ASME BPE