

UPGRADE

A
B
D
E
F
G
H
I
J
K
L

J 010
40mm Extended Butt Weld
Pipe for Orbital Welding

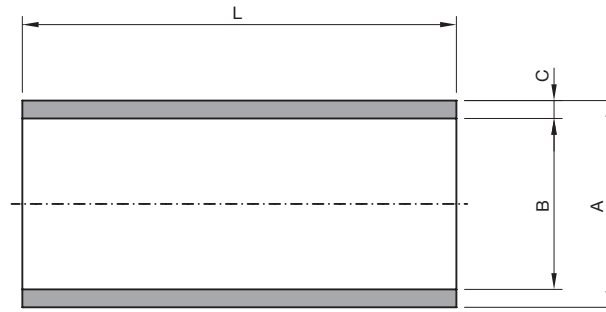
J 015
45° Extended Butt Weld
Elbow for Orbital Welding

J 025
Tri-Clamp
Extended Connection

J 030
45° Tri-Clamp
Extended Connection

TECHNICAL INFORMATION _ CAT. N. YBPE-2A##-40-1

40mm EXTENDED BUTT WELD PIPE FOR ORBITAL WELDING



Clean and Aseptic Valves of CAD Product Line have simple and safe design, with their full drainability, without asymptotic seal and dead leg, are offering fast cleanability and sterilization practices. They are designed to fulfil stringent demands of CIP-SIP and Production Cycles on Aseptic Processing.

40mm Extended Butt Weld Upgrade to perform orbital weldings on CAD Valves connections. Pipe dimensions according to ASME-BPE regulations, material 1.4435-BN2.

CODE	CAD-SIZE	A-mm (inch)	B-mm (inch)	C-mm (inch)	L-mm (inch)
YBPE-2A12-40-1	A12	12,70 (0,50)	9,40 (0,37)	1,65 (0,065)	40,00 (1,58)
YBPE-2A19-40-1	A19	19,05 (0,75)	15,75 (0,62)	1,65 (0,065)	40,00 (1,58)
YBPE-2A25-40-1	A25	25,40 (1,00)	22,10 (0,87)	1,65 (0,065)	40,00 (1,58)
YBPE-2A38-40-1	A38	38,10 (1,50)	34,80 (1,37)	1,65 (0,065)	40,00 (1,58)
YBPE-2A50-40-1	A50	50,80 (2,00)	47,50 (1,87)	1,65 (0,065)	40,00 (1,58)
YBPE-2A63-40-1	A63	63,50 (2,50)	60,20 (2,37)	1,65 (0,065)	40,00 (1,58)
YBPE-2A76-40-1	A76	76,20 (3,00)	72,90 (2,87)	1,65 (0,065)	40,00 (1,58)
YBPE-2A00-40-1	A00	101,60 (4,00)	97,39 (3,83)	2,11 (0,083)	40,00 (1,58)

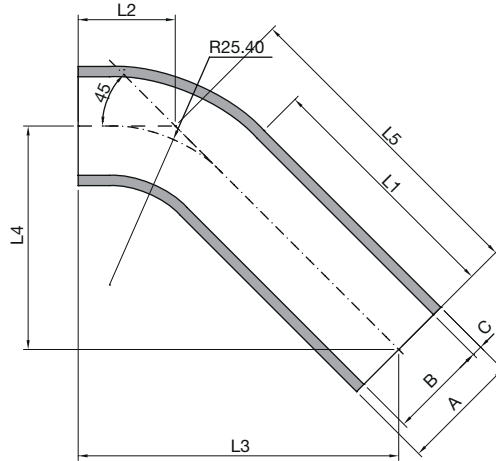
Pipe design according to ASTM® A269/270 - ASME BPE

Pipe material: AISI 316L - 1.4435 - BN2

Optional: AISI 316L according to ASME BPE

TECHNICAL INFORMATION _ CAT. N. YBPE-5A##-45-1

45° EXTENDED BUTT WELD ELBOW FOR ORBITAL WELDING



Clean and Aseptic Valves of CAD Product Line have simple and safe design, with their full drainability, without asymptotic seal and dead leg, are offering fast cleanability and sterilization practices. They are designed to fulfil stringent demands of CIP-SIP and Production Cycles on Aseptic Processing.

45° Extended Butt Weld Upgrade to perform orbital weldings on CAD Valves connections. Pipe dimensions according to ASME-BPE regulations, material 1.4435-BN2.

CODE	CAD SIZE	A mm (inch)	B mm (inch)	C mm (inch)	L1 mm (inch)	L2 mm (inch)	L3 mm (inch)	L4 mm (inch)	L5 mm (inch)
YBPE-5A12-45-1	A12	12,70 (0,50)	9,40 (0,37)	1,65 (0,065)	46,00 (1,81)	20,50 (0,81)	61,00 (2,40)	40,50 (1,60)	57,20 (2,25)
YBPE-5A19-45-1	A19	19,05 (0,75)	15,75 (0,62)	1,65 (0,065)	46,00 (1,81)	20,50 (0,81)	61,00 (2,40)	40,50 (1,60)	57,20 (2,25)
YBPE-5A25-45-1	A25	25,40 (1,00)	22,10 (0,87)	1,65 (0,065)	41,00 (1,61)	26,00 (1,02)	66,00 (2,60)	40,50 (1,60)	57,20 (2,25)
YBPE-5A38-45-1	A38	38,10 (1,50)	34,80 (1,37)	1,65 (0,065)	40,00 (1,58)	34,00 (1,34)	78,50 (3,09)	45,00 (1,77)	63,50 (2,50)
YBPE-5A50-45-1	A50	50,80 (2,00)	47,50 (1,87)	1,65 (0,065)	44,50 (1,75)	46,50 (1,83)	100,50 (3,96)	54,00 (2,13)	76,20 (3,00)
YBPE-5A63-45-1	A63	63,50 (2,50)	60,20 (2,37)	1,65 (0,065)	46,00 (1,81)	54,50 (2,15)	115,00 (4,53)	60,50 (2,38)	85,70 (3,37)
YBPE-5A76-45-1	A76	76,20 (3,00)	72,90 (2,87)	1,65 (0,065)	44,50 (1,75)	44,50 (1,75)	157,00 (6,18)	65,00 (2,56)	92,10 (3,63)
YBPE-5A00-45-1	A00	101,60 (4,00)	97,39 (3,83)	2,11 (0,083)	51,00 (2,01)	51,00 (2,01)	195,00 (7,68)	81,00 (3,19)	114,30 (4,50)

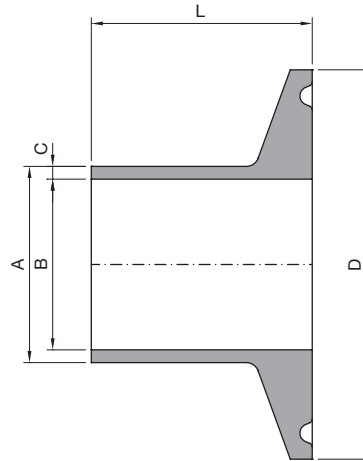
Pipe design according to ASTM® A269/270 - ASME BPE

Pipe material: AISI 316L - 1.4435 - BN2

Optional: AISI 316L according to ASME BPE

TECHNICAL INFORMATION _ CAT. N. YBPE-4A##-TC-#

TRI-CLAMP EXTENDED CONNECTION



Clean and Aseptic Valves of CAD Product Line have simple and safe design, with their full drainability, without asymptotic seal and dead leg, are offering fast cleanability and sterilization practices. They are designed to fulfil stringent demands of CIP-SIP and Production Cycles on Aseptic Processing.

Tri-Clamp Fittings Upgrade. Design according to ASME-BPE regulation. Machined in 1.4435-BN2.

CODE	CAD SIZE	TC SIZE	A mm (inch)	B mm (inch)	C mm (inch)	D mm (inch)	L mm (inch)
YBPE-4A25-TC-1	A25	1"	25,40 (1,00)	22,10 (0,87)	1,65 (0,065)	50,40 (1,98)	28,70 (1,13)
YBPE-4A25-TC-1-12.7							12,70 (0,50)
YBPE-4A25-TC-1-21.5							21,50 (0,85)
YBPE-4A25-TC-1-44.5							44,50 (1,75)
YBPE-4A38-TC-1	A38	1,1/2"	38,10 (1,50)	34,80 (1,37)	1,65 (0,065)	50,40 (1,98)	28,70 (1,13)
YBPE-4A38-TC-1-12.7							12,70 (0,50)
YBPE-4A38-TC-1-21.5							21,50 (0,85)
YBPE-4A38-TC-1-44.5							44,50 (1,75)
YBPE-4A50-TC-1	A50	2"	50,80 (2,00)	47,50 (1,87)	1,65 (0,065)	64,00 (2,52)	28,70 (1,13)
YBPE-4A50-TC-1-12.7							12,70 (0,50)
YBPE-4A50-TC-1-21.5							21,50 (0,85)
YBPE-4A50-TC-1-57.2							57,20 (2,25)

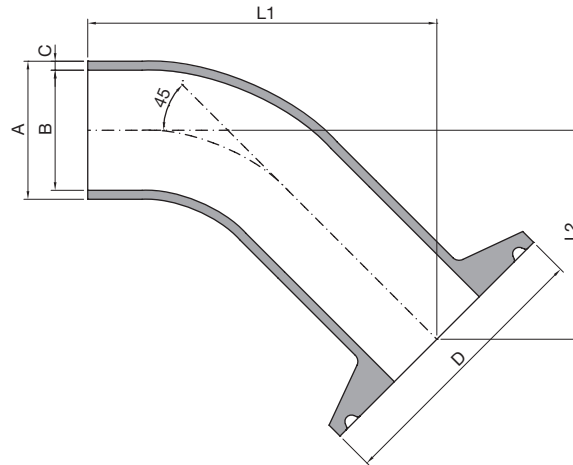
CODE	CAD SIZE	TC SIZE	A mm (inch)	B mm (inch)	C mm (inch)	D mm (inch)	L mm (inch)
YBPE-4A63-TC-1	A63	2,1/2"	63,50 (2,50)	60,20 (2,37)	1,65 (0,065)	77,50 (3,05)	28,70 (1,13)
YBPE-4A63-TC-1-12.7							12,70 (0,50)
YBPE-4A63-TC-1-21.5							21,50 (0,85)
YBPE-4A76-TC-1	A76	3"	76,20 (3,00)	72,90 (2,87)	1,65 (0,065)	91,00 (3,58)	28,70 (1,13)
YBPE-4A76-TC-1-12.7							12,70 (0,50)
YBPE-4A76-TC-1-21.5							21,50 (0,85)
YBPE-4A00-TC-1	A00	4"	101,60 (4,00)	97,39 (3,83)	2,11 (0,083)	91,00 (3,58)	28,70 (1,13)

Tri-Clamp design according to ASME BPE

Tri-Clamp material: 1.4435 - BN2

TECHNICAL INFORMATION _ CAT. N. YBPE-6A##-TC-1

45° TRI-CLAMP EXTENDED CONNECTION



Clean and Aseptic Valves of CAD Product Line have simple and safe design, with their full drainability, without asymptotic seal and dead leg, are offering fast cleanability and sterilization practices. They are designed to fulfil stringent demands of CIP-SIP and Production Cycles on Aseptic Processing.

45° Tri-Clamp Fittings Upgrade. Design according to ASME-BPE regulation. Tri-Clamp and elbow made in AISI 316L - 1.4435-BN2.

CODE	CAD SIZE	TC SIZE	A mm (inch)	B mm (inch)	C mm (inch)	D mm (inch)	L1 mm (inch)	L2 mm (inch)
YBPE-6A12-TC-1	A12	1/2"	12,70 (0,50)	9,40 (0,37)	1,65 (0,065)	25,00 (0,98)	44,00 (1,73)	23,50 (0,93)
YBPE-6A19-TC-1	A19	3/4"	19,05 (0,75)	15,75 (0,62)	1,65 (0,065)	25,00 (0,98)	44,00 (1,73)	23,50 (0,93)
YBPE-6A25-TC-1	A25	1"	25,40 (1,00)	22,10 (0,87)	1,65 (0,065)	50,40 (1,98)	64,00 (2,52)	38,00 (1,50)
YBPE-6A38-TC-1	A38	1,1/2"	38,10 (1,50)	34,80 (1,37)	1,65 (0,065)	50,40 (1,98)	77,50 (3,05)	44,00 (1,73)
YBPE-6A50-TC-1	A50	2"	50,80 (2,00)	47,50 (1,87)	1,65 (0,065)	64,00 (2,52)	99,50 (3,92)	53,00 (2,09)
YBPE-6A63-TC-1	A63	2,1/2"	63,50 (2,50)	60,20 (2,37)	1,65 (0,065)	77,50 (3,05)	113,00 (4,45)	58,50 (2,30)
YBPE-6A76-TC-1	A76	3"	76,20 (3,00)	72,90 (2,87)	1,65 (0,065)	91,00 (3,58)	177,00 (6,97)	85,00 (3,35)
YBPE-6A00-TC-1	A00	4"	101,60 (4,00)	97,39 (3,83)	2,11 (0,083)	119,00 (4,69)	215,00 (8,47)	101,00 (3,98)

Tri-Clamp design according to ASME BPE

Tri-Clamp material: 1.4435 - BN2

Elbow design according to ASTM® A269/270 - ASME BPE

Elbow material: 1.4435 - BN2