

ART. 097

TRI-CLAMP FITTINGS



## INSTRUMENT PORT

Instrument ports are used to adapt pressure and temperature measuring instruments to pipelines reducing dead legs. It has been specifically developed for applications in sterile process engineering. They are available on Tri-Clamp and butt weld ends, for manual and automatic weldings. We can produce special Instrument Ports with several connections on the same piece, to fulfill customer requirements, reducing dimensions and number of parts for sterile pipeline assembly.



## TRI-CLAMP FITTINGS

**ART. 097/A** Long Butt Weld Ends Automatical Welding

Design according to ASME BPE table DT-28

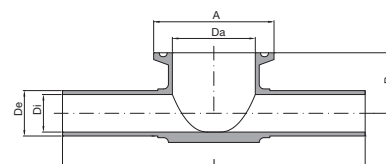
A	Da	B	De	Di	L	Material	Finishing	Code
1.1/2"	34,8	22,20	12,70	9,40	127,00	1.4435-BN2	SF-1	097A50150012 <b>SF1</b>
							SF-4	097A50150012 <b>SF4</b>
		25,40	19,05	15,75	127,00	1.4435-BN2	SF-1	097A50150019 <b>SF1</b>
							SF-4	097A50150019 <b>SF4</b>
		28,60	25,40	22,10	127,00	1.4435-BN2	SF-1	097A50150025 <b>SF1</b>
							SF-4	097A50150025 <b>SF4</b>
2"	47,50	25,40	12,70	9,40	139,80	1.4435-BN2	SF-1	097A50200012 <b>SF1</b>
							SF-4	097A50200012 <b>SF4</b>
		28,60	19,05	15,75	139,80	1.4435-BN2	SF-1	097A50200019 <b>SF1</b>
							SF-4	097A50200019 <b>SF4</b>
		31,80	25,40	22,10	139,80	1.4435-BN2	SF-1	097A50200025 <b>SF1</b>
							SF-4	097A50200025 <b>SF4</b>
		38,10	38,10	34,80	139,80	1.4435-BN2	SF-1	097A50200038 <b>SF1</b>
							SF-4	097A50200038 <b>SF4</b>

**SF-1**

Int. finishing:  $Ra \leq 0,4 \mu\text{m}$  Machined Finish  
 Ext. finishing:  $Ra \leq 0,8 \mu\text{m}$  Machined Finish

**SF-4**

Int. finishing:  $Ra \leq 0,4 \mu\text{m}$  Electropolished  
 Ext. finishing:  $Ra \leq 0,8 \mu\text{m}$  Electropolished

**ART. 097/B** Tri-Clamp Ends

Flange design according to ASME BPE

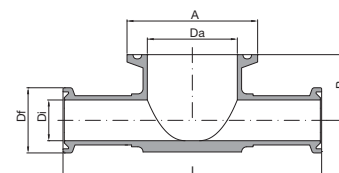
A	Da	B	Df	Di	L	Material	Finishing	Code
1.1/2"	34,8	22,20	25,00	9,40	100,00	1.4435-BN2	SF-1	097B50150012 <b>SF1</b>
							SF-4	097B50150012 <b>SF4</b>
		25,40	25,00	15,75	100,00	1.4435-BN2	SF-1	097B50150019 <b>SF1</b>
							SF-4	097B50150019 <b>SF4</b>
		28,60	50,50	22,10	100,00	1.4435-BN2	SF-1	097B50150025 <b>SF1</b>
							SF-4	097B50150025 <b>SF4</b>
2"	47,50	25,40	25,00	9,40	110,00	1.4435-BN2	SF-1	097B50200012 <b>SF1</b>
							SF-4	097B50200012 <b>SF4</b>
		28,60	25,00	15,75	110,00	1.4435-BN2	SF-1	097B50200019 <b>SF1</b>
							SF-4	097B50200019 <b>SF4</b>
		31,80	50,50	22,10	110,00	1.4435-BN2	SF-1	097B50200025 <b>SF1</b>
							SF-4	097B50200025 <b>SF4</b>
		38,10	50,50	34,80	110,00	1.4435-BN2	SF-1	097B50200038 <b>SF1</b>
							SF-4	097B50200038 <b>SF4</b>

**SF-1**

Int. finishing:  $Ra \leq 0,4 \mu\text{m}$  Machined Finish  
 Ext. finishing:  $Ra \leq 0,8 \mu\text{m}$  Machined Finish

**SF-4**

Int. finishing:  $Ra \leq 0,4 \mu\text{m}$  Electropolished  
 Ext. finishing:  $Ra \leq 0,8 \mu\text{m}$  Electropolished

**ART. 097/C** Short Butt Weld Manual Welding

A	Da	B	De	Di	L	Material	Finishing	Code
1.1/2"	34,8	22,20	12,70	9,40	58,00	1.4435-BN2	SF-1	097C50150012 <b>SF1</b>
							SF-4	097C50150012 <b>SF4</b>
		25,40	19,05	15,75	58,00	1.4435-BN2	SF-1	097C50150019 <b>SF1</b>
							SF-4	097C50150019 <b>SF4</b>
		28,60	25,40	22,10	58,00	1.4435-BN2	SF-1	097C50150025 <b>SF1</b>
							SF-4	097C50150025 <b>SF4</b>
2"	47,50	25,40	12,70	9,40	70,00	1.4435-BN2	SF-1	097C50200012 <b>SF1</b>
							SF-4	097C50200012 <b>SF4</b>
		28,60	19,05	15,75	70,00	1.4435-BN2	SF-1	097C50200019 <b>SF1</b>
							SF-4	097C50200019 <b>SF4</b>
		31,80	25,40	22,10	70,00	1.4435-BN2	SF-1	097C50200025 <b>SF1</b>
							SF-4	097C50200025 <b>SF4</b>
		38,10	38,10	34,80	70,00	1.4435-BN2	SF-1	097C50200038 <b>SF1</b>
							SF-4	097C50200038 <b>SF4</b>

**SF-1**

Int. finishing:  $Ra \leq 0,4 \mu\text{m}$  Machined Finish  
 Ext. finishing:  $Ra \leq 0,8 \mu\text{m}$  Machined Finish

**SF-4**

Int. finishing:  $Ra \leq 0,4 \mu\text{m}$  Electropolished  
 Ext. finishing:  $Ra \leq 0,8 \mu\text{m}$  Electropolished

