

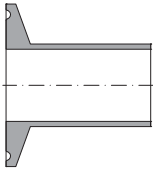
ART. 115

TRI-CLAMP FITTINGS



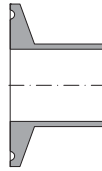
TRI-CLAMP FERRULE 1.4404

EXTRA LONG



ART. 115/A
P. 080

LONG



ART. 115/B
P. 081

SHORT



ART. 115/C
P. 081

MEDIUM



ART. 115/D
P. 082

ART. 115/A Extra long ferrule

ASTM A270 Flange Design according to ASME-BPE

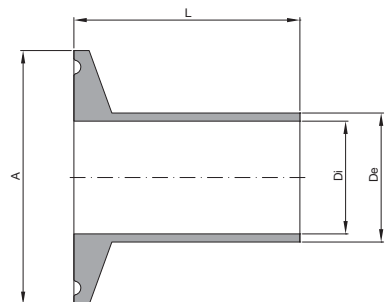
Size	A	Ø De	Ø Di	L	Material	Finishing	Code
1/2"	25,00	12,70	9,40	44,50	1.4404	SF-1	115A60050SF1
						ML	115A60050ML
3/4"	25,00	19,05	15,75	44,50	1.4404	SF-1	115A60075SF1
						ML	115A60075ML
1"	50,50	25,40	22,10	44,50	1.4404	SF-1	115A60100SF1
						ML	115A60100ML
1.1/2"	50,50	38,10	34,80	44,50	1.4404	SF-1	115A60150SF1
						ML	115A60150ML
2"	64,00	50,80	47,50	57,20	1.4404	SF-1	115A60200SF1
						ML	115A60200ML
2.1/2"	77,40	63,50	60,20	57,20	1.4404	SF-1	115A60250SF1
						ML	115A60250ML
3"	90,90	76,20	72,90	57,20	1.4404	SF-1	115A60300SF1
						ML	115A60300ML
4"	118,90	101,60	97,39	57,20	1.4404	SF-1	115A60400SF1
						ML	115A60400ML
6"	166,90	152,40	146,86	76,20	1.4404	SF-1	115A60600SF1
						ML	115A60600ML

SF-1

Int. finishing: $Ra \leq 0,4 \mu\text{m}$ Machined Finish
Ext. finishing: $Ra \leq 0,8 \mu\text{m}$ Machined Finish

ML

Int. finishing: $Ra \leq 0,4 \mu\text{m}$ Machined Finish
Ext. finishing: $Ra \leq 0,8 \mu\text{m}$ Mirror Polished



ART. 115/B Long ferrule

ASTM A270 Flange Design according to ASME-BPE

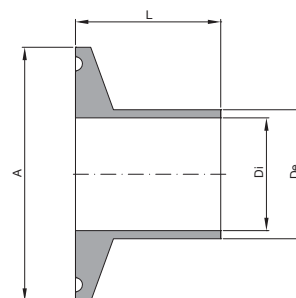
Size	A	Ø De	Ø Di	L	Material	Finishing	Code
1/2"	25,00	12,70	9,40	28,70	1.4404	SF-1	115B60050 SF1
						ML	115B60050 ML
3/4"	25,00	19,05	15,75	28,70	1.4404	SF-1	115B60075 SF1
						ML	115B60075 ML
1"	50,50	25,40	22,10	28,70	1.4404	SF-1	115B60100 SF1
						ML	115B60100 ML
1.1/2"	50,50	38,10	34,80	28,70	1.4404	SF-1	115B60150 SF1
						ML	115B60150 ML
2"	64,00	50,80	47,50	28,70	1.4404	SF-1	115B60200 SF1
						ML	115B60200 ML
2.1/2"	77,40	63,50	60,20	28,70	1.4404	SF-1	115B60250 SF1
						ML	115B60250 ML
3"	90,90	76,20	72,90	28,70	1.4404	SF-1	115B60300 SF1
						ML	115B60300 ML
4"	118,90	101,60	97,39	28,70	1.4404	SF-1	115B60400 SF1
						ML	115B60400 ML
6"	166,90	152,40	146,86	38,10	1.4404	SF-1	115B60600 SF1
						ML	115B60600 ML

SF-1

Int. finishing: $Ra \leq 0,4 \mu\text{m}$ Machined Finish
 Ext. finishing: $Ra \leq 0,8 \mu\text{m}$ Machined Finish

ML

Int. finishing: $Ra \leq 0,4 \mu\text{m}$ Machined Finish
 Ext. finishing: $Ra \leq 0,8 \mu\text{m}$ Mirror Polished

**ART. 115/C Short ferrule**

ASTM A270 Flange Design according to ASME-BPE

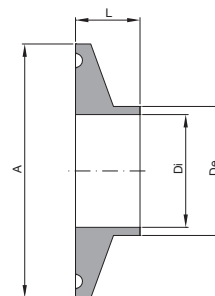
Size	A	Ø De	Ø Di	L	Material	Finishing	Code
1/2"	25,00	12,70	9,40	12,70	1.4404	SF-1	115C60050 SF1
						ML	115C60050 ML
3/4"	25,00	19,05	15,75	12,70	1.4404	SF-1	115C60075 SF1
						ML	115C60075 ML
1"	50,50	25,40	22,10	12,70	1.4404	SF-1	115C60100 SF1
						ML	115C60100 ML
1.1/2"	50,50	38,10	34,80	12,70	1.4404	SF-1	115C60150 SF1
						ML	115C60150 ML
2"	64,00	50,80	47,50	12,70	1.4404	SF-1	115C60200 SF1
						ML	115C60200 ML
2.1/2"	77,40	63,50	60,20	12,70	1.4404	SF-1	115C60250 SF1
						ML	115C60250 ML
3"	90,90	76,20	72,90	12,70	1.4404	SF-1	115C60300 SF1
						ML	115C60300 ML
4"	118,90	101,60	97,39	15,90	1.4404	SF-1	115C60400 SF1
						ML	115C60400 ML
6"	166,90	152,40	146,86	19,10	1.4404	SF-1	115C60600 SF1
						ML	115C60600 ML

SF-1

Int. finishing: $Ra \leq 0,4 \mu\text{m}$ Machined Finish
 Ext. finishing: $Ra \leq 0,8 \mu\text{m}$ Machined Finish

ML

Int. finishing: $Ra \leq 0,4 \mu\text{m}$ Machined Finish
 Ext. finishing: $Ra \leq 0,8 \mu\text{m}$ Mirror Polished



ART. 115/D Medium ferrule

ASTM A270 Flange Design according to ASME-BPE

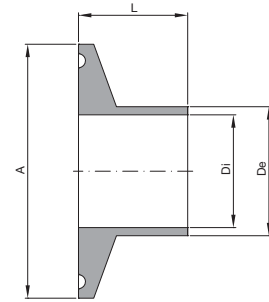
Size	A	Ø De	Ø Di	L	Material	Finishing	Code
1/2"	25,00	12,70	9,40	21,50	1.4404	SF-1	115D60050 SF1
						ML	115D60050 ML
3/4"	25,00	19,05	15,75	21,50	1.4404	SF-1	115D60075 SF1
						ML	115D60075 ML
1"	50,50	25,40	22,10	21,50	1.4404	SF-1	115D60100 SF1
						ML	115D60100 ML
1.1/2"	50,50	38,10	34,80	21,50	1.4404	SF-1	115D60150 SF1
						ML	115D60150 ML
2"	64,00	50,80	47,50	21,50	1.4404	SF-1	115D60200 SF1
						ML	115D60200 ML
2.1/2"	77,40	63,50	60,20	21,50	1.4404	SF-1	115D60250 SF1
						ML	115D60250 ML
3"	90,90	76,20	72,90	21,50	1.4404	SF-1	115D60300 SF1
						ML	115D60300 ML
4"	118,90	101,60	97,39	21,50	1.4404	SF-1	115D60400 SF1
						ML	115D60400 ML
6"	166,90	152,40	146,86	21,50	1.4404	SF-1	115D60600 SF1
						ML	115D60600 ML

SF-1

Int. finishing: $Ra \leq 0,4 \mu\text{m}$ Machined Finish
 Ext. finishing: $Ra \leq 0,8 \mu\text{m}$ Machined Finish

ML

Int. finishing: $Ra \leq 0,4 \mu\text{m}$ Machined Finish
 Ext. finishing: $Ra \leq 0,8 \mu\text{m}$ Mirror Polished

**ART. 115/D Medium ferrule**

DIN 32676 Tri-Clamp

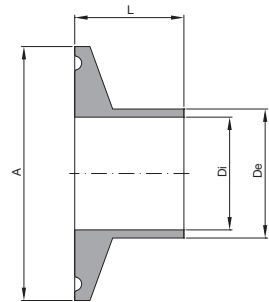
Size	A	Ø De	Ø Di	L	Material	Finishing	Code
DN 10	34,00	13,00	10,00	18,00	1.4404	SF-1	115D6D010 SF1
						ML	115D6D010 ML
DN 15	34,00	19,00	16,00	18,00	1.4404	SF-1	115D6D015 SF1
						ML	115D6D015 ML
DN 20	34,00	23,00	20,00	18,00	1.4404	SF-1	115D6D020 SF1
						ML	115D6D020 ML
DN 25	50,50	29,00	26,00	21,50	1.4404	SF-1	115D6D025 SF1
						ML	115D6D025 ML
DN 32	50,50	35,00	32,00	21,50	1.4404	SF-1	115D6D032 SF1
						ML	115D6D032 ML
DN 40	50,50	41,00	38,00	21,50	1.4404	SF-1	115D6D040 SF1
						ML	115D6D040 ML
DN 50	64,00	53,00	50,00	21,50	1.4404	SF-1	115D6D050 SF1
						ML	115D6D050 ML
DN 65	91,00	70,00	66,00	21,50	1.4404	SF-1	115D6D065 SF1
						ML	115D6D065 ML
DN 80	106,00	85,00	81,00	21,50	1.4404	SF-1	115D6D080 SF1
						ML	115D6D080 ML
DN 100	119,00	104,00	100,00	21,50	1.4404	SF-1	115D6D100 SF1
						ML	115D6D100 ML

SF-1

Int. finishing: $Ra \leq 0,4 \mu\text{m}$ Machined Finish
 Ext. finishing: $Ra \leq 0,8 \mu\text{m}$ Machined Finish

ML

Int. finishing: $Ra \leq 0,4 \mu\text{m}$ Machined Finish
 Ext. finishing: $Ra \leq 0,8 \mu\text{m}$ Mirror Polished



ART. 115/D Medium ferrule
 ISO 1127

Size	A	Ø De	Ø Di	L	Material	Finishing	Code
DN 8	34,00	13,50	10,30	18,00	1.4404	SF-1	115D61008SF1
						ML	115D61008ML
DN 10	34,00	17,20	14,00	18,00	1.4404	SF-1	115D61010SF1
						ML	115D61010ML
DN 15	34,00	21,30	18,10	18,00	1.4404	SF-1	115D61015SF1
						ML	115D61015ML
DN 20	50,50	26,90	23,70	21,50	1.4404	SF-1	115D61020SF1
						ML	115D61020ML
DN 25	50,50	33,70	29,70	21,50	1.4404	SF-1	115D61025SF1
						ML	115D61025ML
DN 32	50,50	42,40	38,40	21,50	1.4404	SF-1	115D61032SF1
						ML	115D61032ML
DN 40	64,00	48,30	44,30	21,50	1.4404	SF-1	115D61040SF1
						ML	115D61040ML
DN 50	77,50	60,30	56,30	21,50	1.4404	SF-1	115D61050SF1
						ML	115D61050ML
DN 65	91,00	76,10	72,10	21,50	1.4404	SF-1	115D61065SF1
						ML	115D61065ML
DN 80	106,00	88,90	84,30	21,50	1.4404	SF-1	115D61080SF1
						ML	115D61080ML

SF-1

Int. finishing: $Ra \leq 0,4 \mu\text{m}$ Machined Finish
 Ext. finishing: $Ra \leq 0,8 \mu\text{m}$ Machined Finish

ML

Int. finishing: $Ra \leq 0,4 \mu\text{m}$ Machined Finish
 Ext. finishing: $Ra \leq 0,8 \mu\text{m}$ Mirror Polished

