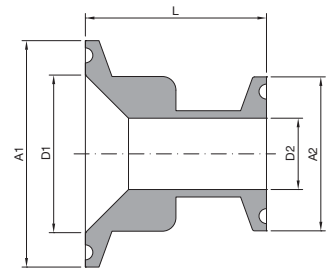




ASTM A270

Ø A1	Ø A2	Ø D1	Ø D2	L	Material	Code
3/4" (25,00)	ASTM A270 1/2" (25,00)	15,75	9,40	40,00	1.4404	040600750050ML
1" (50,50)	ASTM A270 1/2" (25,00)	22,10	9,40	40,00	1.4404	040601000050ML
	ASTM A270 3/4" (25,00)	22,10	15,75	40,00	1.4404	040601000075ML
	DIN DN10 (34,00)	22,10	10,00	40,00	1.4404	04060100D010ML
	DIN DN15 (34,00)	22,10	16,00	40,00	1.4404	04060100D015ML
	DIN DN20 (34,00)	22,10	20,00	40,00	1.4404	04060100D020ML
	ISO DN8 (34,00)	22,10	10,30	40,00	1.4404	04060100I008ML
	ISO DN10 (34,00)	22,10	14,00	40,00	1.4404	04060100I010ML
	ISO DN15 (34,00)	22,10	18,10	40,00	1.4404	04060100I015ML
1.1/2" (50,50)	ASTM A270 1/2" (25,00)	34,80	9,40	40,00	1.4404	040601500050ML
	ASTM A270 3/4" (25,00)	34,80	15,75	40,00	1.4404	040601500075ML
	ASTM A270 1" (50,50)	34,80	22,10	40,00	1.4404	040601500100ML
	DIN DN10 (34,00)	34,80	10,00	40,00	1.4404	04060150D010ML
	DIN DN15 (34,00)	34,80	16,00	40,00	1.4404	04060150D015ML
	DIN DN20 (34,00)	34,80	20,00	40,00	1.4404	04060150D020ML
	DIN DN25 (50,50)	34,80	26,00	40,00	1.4404	04060150D025ML
	DIN DN32 (50,50)	34,80	32,00	40,00	1.4404	04060150D032ML
	ISO DN8 (34,00)	34,80	10,30	40,00	1.4404	04060150I008ML
	ISO DN10 (34,00)	34,80	14,00	40,00	1.4404	04060150I010ML
	ISO DN15 (34,00)	34,80	18,10	40,00	1.4404	04060150I015ML
	ISO DN20 (50,50)	34,80	23,70	40,00	1.4404	04060150I020ML
	ISO DN25 (50,50)	34,80	29,70	40,00	1.4404	04060150I025ML
	2" (64,00)	ASTM A270 1/2" (25,00)	47,50	9,40	40,00	1.4404
ASTM A270 3/4" (25,00)		47,50	15,75	40,00	1.4404	040602000075ML
ASTM A270 1" (50,50)		47,50	22,10	40,00	1.4404	040602000100ML
ASTM A270 1.1/2" (50,50)		47,50	34,80	40,00	1.4404	040602000150ML
DIN DN10 (34,00)		47,50	10,00	40,00	1.4404	04060200D010ML
DIN DN15 (34,00)		47,50	16,00	40,00	1.4404	04060200D015ML
DIN DN20 (34,00)		47,50	20,00	40,00	1.4404	04060200D020ML
DIN DN25 (50,50)		47,50	26,00	40,00	1.4404	04060200D025ML
DIN DN32 (50,50)		47,50	32,00	40,00	1.4404	04060200D032ML
DIN DN40 (50,50)		47,50	38,00	40,00	1.4404	04060200D040ML
ISO DN8 (34,00)		47,50	10,30	40,00	1.4404	04060200I008ML
ISO DN10 (34,00)		47,50	14,00	40,00	1.4404	04060200I010ML
ISO DN15 (34,00)		47,50	18,10	40,00	1.4404	04060200I015ML
ISO DN20 (50,50)		47,50	23,70	40,00	1.4404	04060200I020ML
ISO DN25 (50,50)		47,50	29,70	40,00	1.4404	04060200I025ML
ISO DN32 (50,50)		47,50	38,40	40,00	1.4404	04060200I032ML
ISO DN40 (50,50)		47,50	44,30	40,00	1.4404	04060200I040ML

ML

Int. finishing: $Ra \leq 0,4 \mu\text{m}$ Machined FinishExt. finishing: $Ra \leq 0,8 \mu\text{m}$ Mirror Polished



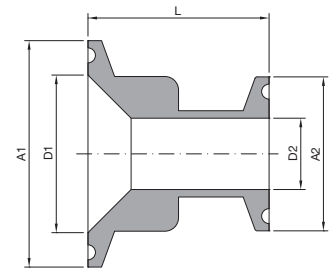
DIN 32676

Ø A1	Ø A2	Ø D1	Ø D2	L	Material	Code
DN15 (34,00)	DIN DN10 (34,00)	16,00	10,00	40,00	1.4404	0406D015D010ML
	ASTM A270 1/2" (25,00)	16,00	9,40	40,00	1.4404	0406D0150050ML
	ASTM A270 3/4" (25,00)	16,00	15,75	40,00	1.4404	0406D0150075ML
	ISO DN8 (34,00)	16,00	10,30	40,00	1.4404	0406D0151008ML
	ISO DN10 (34,00)	16,00	14,00	40,00	1.4404	0406D0151010ML
DN20 (34,00)	DIN DN10 (34,00)	20,00	10,00	40,00	1.4404	0406D020D010ML
	DIN DN15 (34,00)	20,00	16,00	40,00	1.4404	0406D020D015ML
	ASTM A270 1/2" (25,00)	20,00	9,40	40,00	1.4404	0406D0200050ML
	ASTM A270 3/4" (25,00)	20,00	15,75	40,00	1.4404	0406D0200075ML
	ISO DN8 (34,00)	20,00	10,30	40,00	1.4404	0406D0201008ML
	ISO DN10 (34,00)	20,00	14,00	40,00	1.4404	0406D0201010ML
DN25 (50,50)	ISO DN15 (34,00)	20,00	18,10	40,00	1.4404	0406D0201015ML
	DIN DN10 (34,00)	26,00	10,00	40,00	1.4404	0406D025D010ML
	DIN DN15 (34,00)	26,00	16,00	40,00	1.4404	0406D025D015ML
	DIN DN20 (34,00)	26,00	20,00	40,00	1.4404	0406D025D020ML
	ASTM A270 1/2" (25,00)	26,00	9,40	40,00	1.4404	0406D0250050ML
	ASTM A270 3/4" (25,00)	26,00	15,75	40,00	1.4404	0406D0250075ML
	ASTM A270 1" (50,50)	26,00	22,10	40,00	1.4404	0406D0250100ML
	ISO DN8 (34,00)	26,00	10,30	40,00	1.4404	0406D0251008ML
	ISO DN10 (34,00)	26,00	14,00	40,00	1.4404	0406D0251010ML
	ISO DN15 (34,00)	26,00	18,10	40,00	1.4404	0406D0251015ML
DN32 (50,50)	ISO DN20 (50,50)	26,00	23,70	40,00	1.4404	0406D0251020ML
	DIN DN10 (34,00)	32,00	10,00	40,00	1.4404	0406D032D010ML
	DIN DN15 (34,00)	32,00	16,00	40,00	1.4404	0406D032D015ML
	DIN DN20 (34,00)	32,00	20,00	40,00	1.4404	0406D032D020ML
	DIN DN25 (50,50)	32,00	26,00	40,00	1.4404	0406D032D025ML
	ASTM A270 1/2" (25,00)	32,00	9,40	40,00	1.4404	0406D0320050ML
	ASTM A270 3/4" (25,00)	32,00	15,75	40,00	1.4404	0406D0320075ML
	ASTM A270 1" (50,50)	32,00	22,10	40,00	1.4404	0406D0320100ML
	ISO DN8 (34,00)	32,00	10,30	40,00	1.4404	0406D0321008ML
	ISO DN10 (34,00)	32,00	14,00	40,00	1.4404	0406D0321010ML
	ISO DN15 (34,00)	32,00	18,10	40,00	1.4404	0406D0321015ML
	ISO DN20 (50,50)	32,00	23,70	40,00	1.4404	0406D0321020ML
	ISO DN25 (50,50)	32,00	29,70	40,00	1.4404	0406D0321025ML
DN40 (50,50)	DIN DN10 (34,00)	38,00	10,00	40,00	1.4404	0406D040D010ML
	DIN DN15 (34,00)	38,00	16,00	40,00	1.4404	0406D040D015ML
	DIN DN20 (34,00)	38,00	20,00	40,00	1.4404	0406D040D020ML
	DIN DN25 (50,50)	38,00	26,00	40,00	1.4404	0406D040D025ML
	DIN DN32 (50,50)	38,00	32,00	40,00	1.4404	0406D040D032ML
	ASTM A270 1/2" (25,00)	38,00	9,40	40,00	1.4404	0406D0400050ML
	ASTM A270 3/4" (25,00)	38,00	15,75	40,00	1.4404	0406D0400075ML
	ASTM A270 1" (50,50)	38,00	22,10	40,00	1.4404	0406D0400100ML
	ASTM A270 1.1/2" (50,50)	38,00	34,80	40,00	1.4404	0406D0400150ML
	ISO DN8 (34,00)	38,00	10,30	40,00	1.4404	0406D0401008ML
	ISO DN10 (34,00)	38,00	14,00	40,00	1.4404	0406D0401010ML
	ISO DN15 (34,00)	38,00	18,10	40,00	1.4404	0406D0401015ML
	ISO DN20 (50,50)	38,00	23,70	40,00	1.4404	0406D0401020ML
	ISO DN25 (50,50)	38,00	29,70	40,00	1.4404	0406D0401025ML

ML

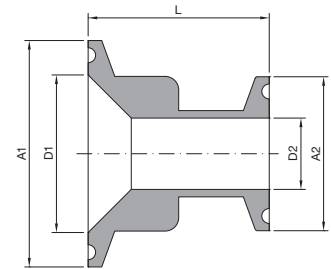
Int. finishing: Ra ≤ 0,4 µm Machined Finish

Ext. finishing: Ra ≤ 0,8 µm Mirror Polished



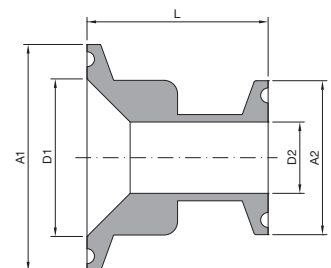
DIN 32676

Ø A1	Ø A2	Ø D1	Ø D2	L	Material	Code
DN50 (64,00)	DIN DN10 (34,00)	50,00	10,00	40,00	1.4404	0406D050D010ML
	DIN DN15 (34,00)	50,00	16,00	40,00	1.4404	0406D050D015ML
	DIN DN20 (34,00)	50,00	20,00	40,00	1.4404	0406D050D020ML
	DIN DN25 (50,50)	50,00	26,00	40,00	1.4404	0406D050D025ML
	DIN DN32 (50,50)	50,00	32,00	40,00	1.4404	0406D050D032ML
	DIN DN40 (50,50)	50,00	38,00	40,00	1.4404	0406D050D040ML
	ASTM A270 1/2" (25,00)	50,00	9,40	40,00	1.4404	0406D0500050ML
	ASTM A270 3/4" (25,00)	50,00	15,75	40,00	1.4404	0406D0500075ML
	ASTM A270 1" (50,50)	50,00	22,10	40,00	1.4404	0406D0500100ML
	ASTM A270 1.1/2" (50,50)	50,00	34,80	40,00	1.4404	0406D0500150ML
	ASTM A270 2" (64,00)	50,00	47,50	40,00	1.4404	0406D0500200ML
	ISO DN8 (34,00)	50,00	10,30	40,00	1.4404	0406D0501008ML
	ISO DN10 (34,00)	50,00	14,00	40,00	1.4404	0406D0501010ML
	ISO DN15 (34,00)	50,00	18,10	40,00	1.4404	0406D0501015ML
	ISO DN20 (50,50)	50,00	23,70	40,00	1.4404	0406D0501020ML
	ISO DN25 (50,50)	50,00	29,70	40,00	1.4404	0406D0501025ML
	ISO DN32 (50,50)	50,00	38,40	40,00	1.4404	0406D0501032ML
	ISO DN40 (50,50)	50,00	44,30	40,00	1.4404	0406D0501040ML



ISO 1127

Ø A1	Ø A2	Ø D1	Ø D2	L	Material	Code
DN10 (34,00)	ISO DN8 (34,00)	14,00	10,30	40,00	1.4404	0406I0101008ML
	ASTM A270 1/2" (25,00)	14,00	9,40	40,00	1.4404	0406I0100050ML
	ASTM A270 3/4" (25,00)	14,00	15,75	40,00	1.4404	0406I0100075ML
	DIN DN10 (34,00)	14,00	10,00	40,00	1.4404	0406I010D010ML
DN15 (34,00)	ISO DN8 (34,00)	18,10	10,30	40,00	1.4404	0406I0151008ML
	ISO DN10 (34,00)	18,10	14,00	40,00	1.4404	0406I0151010ML
	ASTM A270 1/2" (25,00)	18,10	9,40	40,00	1.4404	0406I0150050ML
	ASTM A270 3/4" (25,00)	18,10	15,75	40,00	1.4404	0406I0150075ML
	DIN DN10 (34,00)	18,10	10,00	40,00	1.4404	0406I015D010ML
	DIN DN15 (34,00)	18,10	16,00	40,00	1.4404	0406I015D015ML
DN20 (50,50)	ISO DN8 (34,00)	23,70	10,30	40,00	1.4404	0406I0201008ML
	ISO DN10 (34,00)	23,70	14,00	40,00	1.4404	0406I0201010ML
	ISO DN15 (34,00)	23,70	18,10	40,00	1.4404	0406I0201015ML
	ASTM A270 1/2" (25,00)	23,70	9,40	40,00	1.4404	0406I0200050ML
	ASTM A270 3/4" (25,00)	23,70	15,75	40,00	1.4404	0406I0200075ML
	ASTM A270 1" (50,50)	23,70	22,10	40,00	1.4404	0406I0200100ML
	DIN DN10 (34,00)	23,70	10,00	40,00	1.4404	0406I020D010ML
	DIN DN15 (34,00)	23,70	16,00	40,00	1.4404	0406I020D015ML
	DIN DN20 (34,00)	23,70	20,00	40,00	1.4404	0406I020D020ML





ISO 1127

Ø A1	Ø A2	Ø D1	Ø D2	L	Material	Code
DN25 (50,50)	ISO DN8 (34,00)	29,70	10,30	40,00	1.4404	0406I025I008ML
	ISO DN10 (34,00)	29,70	14,00	40,00	1.4404	0406I025I010ML
	ISO DN15 (34,00)	29,70	18,10	40,00	1.4404	0406I025I015ML
	ISO DN20 (50,50)	29,70	23,70	40,00	1.4404	0406I025I020ML
	ASTM A270 1/2" (25,00)	29,70	9,40	40,00	1.4404	0406I0250050ML
	ASTM A270 3/4" (25,00)	29,70	15,75	40,00	1.4404	0406I0250075ML
	ASTM A270 1" (50,50)	29,70	22,10	40,00	1.4404	0406I0250100ML
	DIN DN10 (34,00)	29,70	10,00	40,00	1.4404	0406I025D010ML
	DIN DN15 (34,00)	29,70	16,00	40,00	1.4404	0406I025D015ML
	DIN DN20 (34,00)	29,70	20,00	40,00	1.4404	0406I025D020ML
DIN DN25 (50,50)	29,70	26,00	40,00	1.4404	0406I025D025ML	
DN32 (50,50)	ISO DN8 (34,00)	38,40	10,30	40,00	1.4404	0406I032I008ML
	ISO DN10 (34,00)	38,40	14,00	40,00	1.4404	0406I032I010ML
	ISO DN15 (34,00)	38,40	18,10	40,00	1.4404	0406I032I015ML
	ISO DN20 (50,50)	38,40	23,70	40,00	1.4404	0406I032I020ML
	ISO DN25 (50,50)	38,40	29,70	40,00	1.4404	0406I032I025ML
	ASTM A270 1/2" (25,00)	38,40	9,40	40,00	1.4404	0406I0320050ML
	ASTM A270 3/4" (25,00)	38,40	15,75	40,00	1.4404	0406I0320075ML
	ASTM A270 1" (50,50)	38,40	22,10	40,00	1.4404	0406I0320100ML
	ASTM A270 1.1/2" (50,50)	38,40	34,80	40,00	1.4404	0406I0320150ML
	DIN DN10 (34,00)	38,40	10,00	40,00	1.4404	0406I032D010ML
	DIN DN15 (34,00)	38,40	16,00	40,00	1.4404	0406I032D015ML
	DIN DN20 (34,00)	38,40	20,00	40,00	1.4404	0406I032D020ML
	DIN DN25 (50,50)	38,40	26,00	40,00	1.4404	0406I032D025ML
DIN DN32 (50,50)	38,40	32,00	40,00	1.4404	0406I032D032ML	
DN40 (64,00)	ISO DN8 (34,00)	44,30	10,30	40,00	1.4404	0406I040I008ML
	ISO DN10 (34,00)	44,30	14,00	40,00	1.4404	0406I040I010ML
	ISO DN15 (34,00)	44,30	18,10	40,00	1.4404	0406I040I015ML
	ISO DN20 (50,50)	44,30	23,70	40,00	1.4404	0406I040I020ML
	ISO DN25 (50,50)	44,30	29,70	40,00	1.4404	0406I040I025ML
	ISO DN32 (50,50)	44,30	38,40	40,00	1.4404	0406I040I032ML
	ASTM A270 1/2" (25,00)	44,30	9,40	40,00	1.4404	0406I0400050ML
	ASTM A270 3/4" (25,00)	44,30	15,75	40,00	1.4404	0406I0400075ML
	ASTM A270 1" (50,50)	44,30	22,10	40,00	1.4404	0406I0400100ML
	ASTM A270 1.1/2" (50,50)	44,30	34,80	40,00	1.4404	0406I0400150ML
	DIN DN10 (34,00)	44,30	10,00	40,00	1.4404	0406I040D010ML
	DIN DN15 (34,00)	44,30	16,00	40,00	1.4404	0406I040D015ML
	DIN DN20 (34,00)	44,30	20,00	40,00	1.4404	0406I040D020ML
	DIN DN25 (50,50)	44,30	26,00	40,00	1.4404	0406I040D025ML
	DIN DN32 (50,50)	44,30	32,00	40,00	1.4404	0406I040D032ML
	DIN DN40 (50,50)	44,30	38,00	40,00	1.4404	0406I040D040ML

