

ART. 110

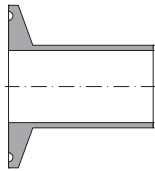
TRI-CLAMP FITTINGS



TRI-CLAMP FERRULE 1.4435

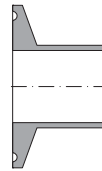
According to Table: DT-22
Sulfur: $\leq 0,017\%$

EXTRA LONG



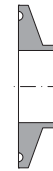
ART. 110/A
P. 078

LONG



ART. 110/B
P. 079

SHORT



ART. 110/C
P. 079

ART. 110/A Extra long ferrule

ASTM A270 Flange Design according to ASME-BPE

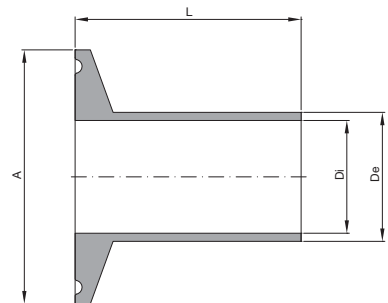
Size	A	Ø De	Ø Di	L	Material	Finishing	Code
1/4"	25,00	6,35	4,57	44,50	1.4435-BN2	SF-1	110A50025SF1
						SF-4	110A50025SF4
3/8"	25,00	9,53	7,75	44,50	1.4435-BN2	SF-1	110A50037SF1
						SF-4	110A50037SF4
1/2"	25,00	12,70	9,40	44,50	1.4435-BN2	SF-1	110A50050SF1
						SF-4	110A50050SF4
3/4"	25,00	19,05	15,75	44,50	1.4435-BN2	SF-1	110A50075SF1
						SF-4	110A50075SF4
1"	50,50	25,40	22,10	44,50	1.4435-BN2	SF-1	110A50100SF1
						SF-4	110A50100SF4
1.1/2"	50,50	38,10	34,80	44,50	1.4435-BN2	SF-1	110A50150SF1
						SF-4	110A50150SF4
2"	64,00	50,80	47,50	57,20	1.4435-BN2	SF-1	110A50200SF1
						SF-4	110A50200SF4
2.1/2"	77,40	63,50	60,20	57,20	1.4435-BN2	SF-1	110A50250SF1
						SF-4	110A50250SF4
3"	90,90	76,20	72,90	57,20	1.4435-BN2	SF-1	110A50300SF1
						SF-4	110A50300SF4
4"	118,90	101,60	97,39	57,20	1.4435-BN2	SF-1	110A50400SF1
						SF-4	110A50400SF4
6"	166,90	152,40	146,86	76,20	1.4435-BN2	SF-1	110A50600SF1
						SF-4	110A50600SF4

SF-1

Int. finishing: $Ra \leq 0,4 \mu\text{m}$ Machined Finish
Ext. finishing: $Ra \leq 0,8 \mu\text{m}$ Machined Finish

SF-4

Int. finishing: $Ra \leq 0,4 \mu\text{m}$ Electropolished
Ext. finishing: $Ra \leq 0,8 \mu\text{m}$ Electropolished



ART. 110/B Long ferrule

ASTM A270 Flange Design according to ASME-BPE

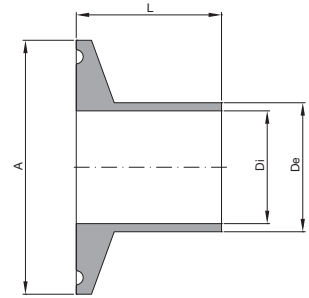
Size	A	Ø De	Ø Di	L	Material	Finishing	Code
1/4"	25,00	6,35	4,57	28,70	1.4435-BN2	SF-1	110B50025SF1
						SF-4	110B50025SF4
3/8"	25,00	9,53	7,75	28,70	1.4435-BN2	SF-1	110B50037SF1
						SF-4	110B50037SF4
1/2"	25,00	12,70	9,40	28,70	1.4435-BN2	SF-1	110B50050SF1
						SF-4	110B50050SF4
3/4"	25,00	19,05	15,75	28,70	1.4435-BN2	SF-1	110B50075SF1
						SF-4	110B50075SF4
1"	50,50	25,40	22,10	28,70	1.4435-BN2	SF-1	110B50100SF1
						SF-4	110B50100SF4
1.1/2"	50,50	38,10	34,80	28,70	1.4435-BN2	SF-1	110B50150SF1
						SF-4	110B50150SF4
2"	64,00	50,80	47,50	28,70	1.4435-BN2	SF-1	110B50200SF1
						SF-4	110B50200SF4
2.1/2"	77,40	63,50	60,20	28,70	1.4435-BN2	SF-1	110B50250SF1
						SF-4	110B50250SF4
3"	90,90	76,20	72,90	28,70	1.4435-BN2	SF-1	110B50300SF1
						SF-4	110B50300SF4
4"	118,90	101,60	97,39	28,70	1.4435-BN2	SF-1	110B50400SF1
						SF-4	110B50400SF4
6"	166,90	152,40	146,86	38,10	1.4435-BN2	SF-1	110B50600SF1
						SF-4	110B50600SF4

SF-1

Int. finishing: $Ra \leq 0,4 \mu\text{m}$ Machined Finish
 Ext. finishing: $Ra \leq 0,8 \mu\text{m}$ Machined Finish

SF-4

Int. finishing: $Ra \leq 0,4 \mu\text{m}$ Electropolished
 Ext. finishing: $Ra \leq 0,8 \mu\text{m}$ Electropolished

**ART. 110/C Short ferrule**

ASTM A270 Flange Design according to ASME-BPE

Size	A	Ø De	Ø Di	L	Material	Finishing	Code
1/4"	25,00	6,35	4,57	12,70	1.4435-BN2	SF-1	110C50025SF1
						SF-4	110C50025SF4
3/8"	25,00	9,53	7,75	12,70	1.4435-BN2	SF-1	110C50037SF1
						SF-4	110C50037SF4
1/2"	25,00	12,70	9,40	12,70	1.4435-BN2	SF-1	110C50050SF1
						SF-4	110C50050SF4
3/4"	25,00	19,05	15,75	12,70	1.4435-BN2	SF-1	110C50075SF1
						SF-4	110C50075SF4
1"	50,50	25,40	22,10	12,70	1.4435-BN2	SF-1	110C50100SF1
						SF-4	110C50100SF4
1.1/2"	50,50	38,10	34,80	12,70	1.4435-BN2	SF-1	110C50150SF1
						SF-4	110C50150SF4
2"	64,00	50,80	47,50	12,70	1.4435-BN2	SF-1	110C50200SF1
						SF-4	110C50200SF4
2.1/2"	77,40	63,50	60,20	12,70	1.4435-BN2	SF-1	110C50250SF1
						SF-4	110C50250SF4
3"	90,90	76,20	72,90	12,70	1.4435-BN2	SF-1	110C50300SF1
						SF-4	110C50300SF4
4"	118,90	101,60	97,39	15,90	1.4435-BN2	SF-1	110C50400SF1
						SF-4	110C50400SF4
6"	166,90	152,40	146,86	19,10	1.4435-BN2	SF-1	110C50600SF1
						SF-4	110C50600SF4

SF-1

Int. finishing: $Ra \leq 0,4 \mu\text{m}$ Machined Finish
 Ext. finishing: $Ra \leq 0,8 \mu\text{m}$ Machined Finish

SF-4

Int. finishing: $Ra \leq 0,4 \mu\text{m}$ Electropolished
 Ext. finishing: $Ra \leq 0,8 \mu\text{m}$ Electropolished

