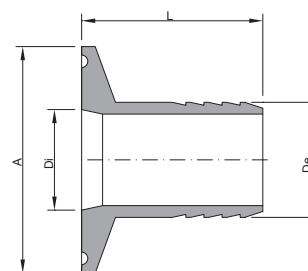




ASTM A270 Flange design according to ASME-BPE

| Size | Ø A | Ø De | Ø Di | L | Material | Finishing | Code |
|--------|--------|--------|-------|-------|----------|-----------|-------------|
| 1/2" | 25,00 | 12,70 | 9,40 | 40,00 | 1.4404 | ML | 028A60050ML |
| 3/4" | 25,00 | 19,05 | 15,75 | 40,00 | 1.4404 | ML | 028A60075ML |
| 1" | 50,50 | 25,40 | 22,10 | 40,00 | 1.4404 | ML | 028A60100ML |
| 1.1/2" | 50,50 | 38,10 | 34,80 | 40,00 | 1.4404 | ML | 028A60150ML |
| 2" | 64,00 | 50,80 | 47,50 | 50,00 | 1.4404 | ML | 028A60200ML |
| 2.1/2" | 77,50 | 63,50 | 60,20 | 60,00 | 1.4404 | ML | 028A60250ML |
| 3" | 90,90 | 76,20 | 72,90 | 78,50 | 1.4404 | ML | 028A60300ML |
| 4" | 118,90 | 101,60 | 97,40 | 86,50 | 1.4404 | ML | 028A60400ML |

MLInt. finishing: $Ra \leq 0,4 \mu\text{m}$ Machined FinishExt. finishing: $Ra \leq 0,8 \mu\text{m}$ Mirror Polished

DIN 32676 Tri-Clamp

| Size | Ø A | Ø De | Ø Di | L | Material | Finishing | Code |
|-------|-------|-------|-------|-------|----------|-----------|-------------|
| DN 10 | 34,00 | 13,00 | 10,00 | 40,00 | 1.4404 | ML | 028A6D010ML |
| DN 15 | 34,00 | 19,00 | 16,00 | 40,00 | 1.4404 | ML | 028A6D015ML |
| DN 20 | 34,00 | 23,00 | 20,00 | 40,00 | 1.4404 | ML | 028A6D020ML |
| DN 25 | 50,50 | 29,00 | 26,00 | 40,00 | 1.4404 | ML | 028A6D025ML |
| DN 32 | 50,50 | 35,00 | 32,00 | 40,00 | 1.4404 | ML | 028A6D032ML |
| DN 40 | 50,50 | 41,00 | 38,00 | 40,00 | 1.4404 | ML | 028A6D040ML |

ISO 1127 Tri-Clamp

| Size | Ø A | Ø De | Ø Di | L | Material | Finishing | Code |
|-------|-------|-------|-------|-------|----------|-----------|-------------|
| DN 8 | 34,00 | 13,50 | 10,30 | 40,00 | 1.4404 | ML | 028A6I008ML |
| DN 15 | 34,00 | 21,30 | 18,10 | 40,00 | 1.4404 | ML | 028A6I015ML |
| DN 20 | 50,50 | 26,90 | 23,70 | 40,00 | 1.4404 | ML | 028A6I020ML |
| DN 25 | 50,50 | 33,70 | 29,70 | 40,00 | 1.4404 | ML | 028A6I025ML |
| DN 32 | 50,50 | 42,40 | 38,40 | 40,00 | 1.4404 | ML | 028A6I032ML |



ASTM A270 - Flange design according to ASME-BPE

| Size | Ø A | Ø De | Ø Di | L | Material | Finishing | Code |
|------|-------|-------|-------|-------|----------|-----------|---------------|
| 1/2" | 25,00 | 6,00 | 3,00 | 40,00 | 1.4404 | ML | 028B6005006ML |
| | | 8,00 | 5,00 | 40,00 | 1.4404 | ML | 028B6005008ML |
| | | 10,00 | 7,00 | 40,00 | 1.4404 | ML | 028B6005010ML |
| | | 12,00 | 9,50 | 40,00 | 1.4404 | ML | 028B6005012ML |
| | | 13,70 | 10,00 | 40,00 | 1.4404 | ML | 028B6005013ML |
| | | 14,00 | 11,00 | 40,00 | 1.4404 | ML | 028B6005014ML |
| | | 16,00 | 13,00 | 40,00 | 1.4404 | ML | 028B6005016ML |
| | | 18,00 | 15,00 | 40,00 | 1.4404 | ML | 028B6005018ML |
| | | 21,30 | 15,75 | 40,00 | 1.4404 | ML | 028B6005021ML |
| 1" | 50,50 | 6,00 | 3,00 | 40,00 | 1.4404 | ML | 028B6010006ML |
| | | 8,00 | 5,00 | 40,00 | 1.4404 | ML | 028B6010008ML |
| | | 10,00 | 7,00 | 40,00 | 1.4404 | ML | 028B6010010ML |
| | | 12,00 | 9,50 | 40,00 | 1.4404 | ML | 028B6010012ML |
| | | 13,70 | 10,00 | 40,00 | 1.4404 | ML | 028B6010013ML |
| | | 14,00 | 11,00 | 40,00 | 1.4404 | ML | 028B6010014ML |
| | | 16,00 | 13,00 | 40,00 | 1.4404 | ML | 028B6010016ML |
| | | 18,00 | 15,00 | 40,00 | 1.4404 | ML | 028B6010018ML |
| | | | | 21,30 | 18,00 | 40,00 | 1.4404 |

MLInt. finishing: $Ra \leq 0,4 \mu\text{m}$ Machined FinishExt. finishing: $Ra \leq 0,8 \mu\text{m}$ Mirror Polished