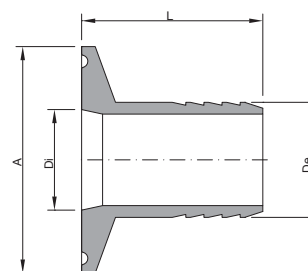




ASTM A270 Flange design according to ASME-BPE

Size	Ø A	Ø De	Ø Di	L	Material	Finishing	Code
1/2"	25,00	12,70	9,40	40,00	1.4404	ML	028A60050ML
3/4"	25,00	19,05	15,75	40,00	1.4404	ML	028A60075ML
1"	50,50	25,40	22,10	40,00	1.4404	ML	028A60100ML
1.1/2"	50,50	38,10	34,80	40,00	1.4404	ML	028A60150ML
2"	64,00	50,80	47,50	50,00	1.4404	ML	028A60200ML
2.1/2"	77,50	63,50	60,20	60,00	1.4404	ML	028A60250ML
3"	90,90	76,20	72,90	78,50	1.4404	ML	028A60300ML
4"	118,90	101,60	97,40	86,50	1.4404	ML	028A60400ML

MLInt. finishing: $Ra \leq 0,4 \mu\text{m}$ Machined FinishExt. finishing: $Ra \leq 0,8 \mu\text{m}$ Mirror Polished

DIN 32676 Tri-Clamp

Size	Ø A	Ø De	Ø Di	L	Material	Finishing	Code
DN 10	34,00	13,00	10,00	40,00	1.4404	ML	028A6D010ML
DN 15	34,00	19,00	16,00	40,00	1.4404	ML	028A6D015ML
DN 20	34,00	23,00	20,00	40,00	1.4404	ML	028A6D020ML
DN 25	50,50	29,00	26,00	40,00	1.4404	ML	028A6D025ML
DN 32	50,50	35,00	47,50	40,00	1.4404	ML	028A6D032ML
DN 40	50,50	41,00	60,20	40,00	1.4404	ML	028A6D040ML

ISO 1127 Tri-Clamp

Size	Ø A	Ø De	Ø Di	L	Material	Finishing	Code
DN 8	34,00	13,50	10,30	40,00	1.4404	ML	028A6I008ML
DN 15	34,00	21,30	18,10	40,00	1.4404	ML	028A6I015ML
DN 20	50,50	26,90	23,70	40,00	1.4404	ML	028A6I020ML
DN 25	50,50	33,70	29,70	40,00	1.4404	ML	028A6I025ML
DN 32	50,50	42,40	38,40	40,00	1.4404	ML	028A6I032ML



ASTM A270 - Flange design according to ASME-BPE

Size	Ø A	Ø De	Ø Di	L	Material	Finishing	Code
1/2"	25,00	6,00	3,00	40,00	1.4404	ML	028B6005006ML
		8,00	5,00	40,00	1.4404	ML	028B6005008ML
		10,00	7,00	40,00	1.4404	ML	028B6005010ML
		12,00	9,50	40,00	1.4404	ML	028B6005012ML
		13,70	10,00	40,00	1.4404	ML	028B6005013ML
		14,00	11,00	40,00	1.4404	ML	028B6005014ML
		16,00	13,00	40,00	1.4404	ML	028B6005016ML
		18,00	15,00	40,00	1.4404	ML	028B6005018ML
		21,30	15,75	40,00	1.4404	ML	028B6005021ML
1"	50,50	6,00	3,00	40,00	1.4404	ML	028B6010006ML
		8,00	5,00	40,00	1.4404	ML	028B6010008ML
		10,00	7,00	40,00	1.4404	ML	028B6010010ML
		12,00	9,50	40,00	1.4404	ML	028B6010012ML
		13,70	10,00	40,00	1.4404	ML	028B6010013ML
		14,00	11,00	40,00	1.4404	ML	028B6010014ML
		16,00	13,00	40,00	1.4404	ML	028B6010016ML
		18,00	15,00	40,00	1.4404	ML	028B6010018ML
		21,30	18,00	40,00	1.4404	ML	028B6010021ML

MLInt. finishing: $Ra \leq 0,4 \mu\text{m}$ Machined FinishExt. finishing: $Ra \leq 0,8 \mu\text{m}$ Mirror Polished