



Female Gas Threaded BSPP

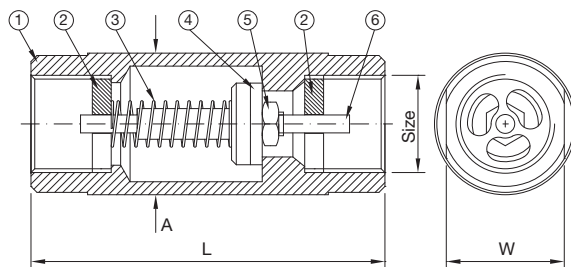
Size	Ø A	Ø B	L	Valve Material	Gasket Material	Code
1/4"	22,00	60,00	17,00	1.4404	FPM/FKM	001Z60025V
					EPDM	001Z60025EP
					PTFE - FDA	001Z60025PT70
					SILICONE FDA	001Z60025SIF
3/8"	25,00	65,00	20,00	1.4404	FPM/FKM	001Z60037V
					EPDM	001Z60037EP
					PTFE - FDA	001Z60037PT70
					SILICONE FDA	001Z60037SIF
1/2"	30,00	75,00	25,00	1.4404	FPM/FKM	001Z60050V
					EPDM	001Z60050EP
					PTFE - FDA	001Z60050PT70
					SILICONE FDA	001Z60050SIF
3/4"	38,00	80,00	32,00	1.4404	FPM/FKM	001Z60075V
					EPDM	001Z60075EP
					PTFE - FDA	001Z60075PT70
					SILICONE FDA	001Z60075SIF
1"	48,00	85,00	40,00	1.4404	FPM/FKM	001Z60100V
					EPDM	001Z60100EP
					PTFE - FDA	001Z60100PT70
					SILICONE FDA	001Z60100SIF
1.1/4"	60,00	90,00	50,00	1.4404	FPM/FKM	001Z60125V
					EPDM	001Z60125EP
					PTFE - FDA	001Z60125PT70
					SILICONE FDA	001Z60125SIF
1.1/2"	65,00	95,00	56,00	1.4404	FPM/FKM	001Z60150V
					EPDM	001Z60150EP
					PTFE - FDA	001Z60150PT70
					SILICONE FDA	001Z60150SIF
2"	75,00	105,00	66,00	1.4404	FPM/FKM	001Z60200V
					EPDM	001Z60200EP
					PTFE - FDA	001Z60200PT70
					SILICONE FDA	001Z60200SIF
2.1/2"	99,00	130,00	85,00	1.4404	FPM/FKM	001Z60250V
					EPDM	001Z60250EP
					PTFE - FDA	001Z60250PT70
					SILICONE FDA	001Z60250SIF

Int. finishing: $Ra \leq 1,6 \mu m$
 Ext. finishing: $Ra \leq 1,6 \mu m$

Valve body machined from solid, no middle connections. The closure area is between the 2 support points of the piston.

Max Working Conditions:
60 bar and (870 psi) and 150°C (300°F)

Gaskets:
FDA approved PTFE or FPM/FKM or EPDM or SILICONE



N°	Name	Material
1	Body	AISI 316L
2	Bearing	AISI 316L
3	Spring	AISI 316L
4	Gasket	FPM/FKM or EPDM or PTFE-FDA or SILICONE
5	Nut	AISI 316L
6	Piston	AISI 316L

N°	Description	Valve size	Code
2	Bearing n° 1 pcs	1/4"	0016002502
		3/8"	0016003702
		1/2"	0016005002
		3/4"	0016007502
		1"	0016010002
		1.1/4"	0016012502
		1.1/2"	0016015002
		2"	0016020002
3	Spring n° 1 pcs	1/4"	0016002503
		3/8"	0016003703
		1/2"	0016005003
		3/4"	0016007503
		1"	0016010003
		1.1/4"	0016012503
		1.1/2"	0016015003
		2"	0016020003
4	FPM/FKM Gasket n° 1 pcs	1/4"	001X002504V
		3/8"	001X003704V
		1/2"	001X005004V
		3/4"	001X007504V
		1"	001X010004V
		1.1/4"	001X012504V
		1.1/2"	001X015004V
		2"	001X020004V
4	EPDM Gasket n° 1 pcs	1/4"	001X002504EP
		3/8"	001X003704EP
		1/2"	001X005004EP
		3/4"	001X007504EP
		1"	001X010004EP
		1.1/4"	001X012504EP
		1.1/2"	001X015004EP
		2"	001X020004EP
4	PTFE-FDA Gasket n° 1 pcs	1/4"	001X002504PT70
		3/8"	001X003704PT70
		1/2"	001X005004PT70
		3/4"	001X007504PT70
		1"	001X010004PT70
		1.1/4"	001X012504PT70
		1.1/2"	001X015004PT70
		2"	001X020004PT70
4	SILICONE FDA Gasket n° 1 pcs	1/4"	001X002504SIF
		3/8"	001X003704SIF
		1/2"	001X005004SIF
		3/4"	001X007504SIF
		1"	001X010004SIF
		1.1/4"	001X012504SIF
		1.1/2"	001X015004SIF
		2"	001X020004SIF
5	Nut n° 1 pcs	1/4"	N-A4-M03-H024
		3/8"	N-A4-M04-H040
		1/2"	N-A4-M05-H040
		3/4"	N-A4-M06-H050
		1"	N-A4-M06-H050
		1.1/4"	N-A4-M08-H065
		1.1/2"	N-A4-M10-H060
		2"	N-A4-M10-H060
6	Piston n° 1 pcs	1/4"	0016002506
		3/8"	0016003706
		1/2"	0016005006
		3/4"	0016007506
		1"	0016010006
		1.1/4"	0016012506
		1.1/2"	0016015006
		2"	0016020006
6	Piston n° 1 pcs	2.1/2"	0016025006

N°	Description	Valve size	Code
2	Bearing n° 1 pcs	1/4"	0016002502
		3/8"	0016003702
		1/2"	0016005002
		3/4"	0016007502
		1"	0016010002
		1.1/4"	0016012502
		1.1/2"	0016015002
		2"	0016020002
3	Spring n° 1 pcs	1/4"	0016002503
		3/8"	0016003703
		1/2"	0016005003
		3/4"	0016007503
		1"	0016010003
		1.1/4"	0016012503
		1.1/2"	0016015003
		2"	0016020003
4	FPM/FKM Gasket n° 1 pcs	1/4"	001X002504V
		3/8"	001X003704V
		1/2"	001X005004V
		3/4"	001X007504V
		1"	001X010004V
		1.1/4"	001X012504V
		1.1/2"	001X015004V
		2"	001X020004V
4	EPDM Gasket n° 1 pcs	1/4"	001X002504EP
		3/8"	001X003704EP
		1/2"	001X005004EP
		3/4"	001X007504EP
		1"	001X010004EP
		1.1/4"	001X012504EP
		1.1/2"	001X015004EP
		2"	001X020004EP
4	PTFE-FDA Gasket n° 1 pcs	1/4"	001X002504PT70
		3/8"	001X003704PT70
		1/2"	001X005004PT70
		3/4"	001X007504PT70
		1"	001X010004PT70
		1.1/4"	001X012504PT70
		1.1/2"	001X015004PT70
		2"	001X020004PT70
4	SILICONE FDA Gasket n° 1 pcs	1/4"	001X002504SIF
		3/8"	001X003704SIF
		1/2"	001X005004SIF
		3/4"	001X007504SIF
		1"	001X010004SIF
		1.1/4"	001X012504SIF
		1.1/2"	001X015004SIF
		2"	001X020004SIF
5	Nut n° 1 pcs	1/4"	N-A4-M03-H024
		3/8"	N-A4-M04-H040
		1/2"	N-A4-M05-H040
		3/4"	N-A4-M06-H050
		1"	N-A4-M06-H050
		1.1/4"	N-A4-M08-H065
		1.1/2"	N-A4-M10-H060
		2"	N-A4-M10-H060
6	Piston n° 1 pcs	1/4"	0016002506
		3/8"	0016003706
		1/2"	0016005006
		3/4"	0016007506
		1"	0016010006
		1.1/4"	0016012506
		1.1/2"	0016015006
		2"	0016020006
6	Piston n° 1 pcs	2.1/2"	0016025006